

**Klamath River Basin Fall Chinook Salmon Spawner Escapement, In-river Harvest and Run-size Estimates,  
1978-2021 a/**

**SPAWNER ESCAPEMENT**

	1978			1979			1980		
	Grilse	Adults	Totals	Grilse	Adults	Totals	Grilse	Adults	Totals
<b>Hatchery Spawners</b>									
Iron Gate Hatchery (IGH)	925	6,945	7,870	257	2,301	2,558	451	2,412	2,863
Trinity River Hatchery (TRH)	1,325	6,034	7,359	964	1,335	2,299	2,256	4,099	6,355
Subtotals	<b>2,250</b>	<b>12,979</b>	<b>15,229</b>	<b>1,221</b>	<b>3,636</b>	<b>4,857</b>	<b>2,707</b>	<b>6,511</b>	<b>9,218</b>
<b>Natural Spawners</b>									
Trinity River basin (above Willow Creek, excluding TRH)	4,712	31,052	35,764	3,936	8,028	11,964	16,837	7,700	24,537
Salmon River basin	1,400	2,600	4,000	150	1,000	1,150	200	800	1,000
Scott River basin	1,909	3,423	5,332	428	3,396	3,824	2,245	2,032	4,277
Shasta River basin	6,707	12,024	18,731	1,040	7,111	8,151	4,334	3,762	8,096
Bogus Creek basin	651	4,928	5,579	494	5,444	5,938	1,749	3,321	5,070
Main Stem Klamath River (excluding IGH)	300	1,700	2,000	466	4,190	4,656	867	2,468	3,335
Misc. Klamath tributaries (above Hoopa and Yurok Reservations)	735	2,765	3,500	147	1,068	1,215	500	1,000	1,500
Hoopa and Yurok Reservation tribs.	-- b/	-- b/	-- b/	100 c/	400 c/	500 c/	250 c/	400 c/	650 c/
Subtotals	<b>16,414</b>	<b>58,492</b>	<b>74,906</b>	<b>6,761</b>	<b>30,637</b>	<b>37,398</b>	<b>26,982</b>	<b>21,483</b>	<b>48,465</b>
<b>Total Spawner Escapement</b>	<b>18,664</b>	<b>71,471</b>	<b>90,135</b>	<b>7,982</b>	<b>34,273</b>	<b>42,255</b>	<b>29,689</b>	<b>27,994</b>	<b>57,683</b>

**IN-RIVER HARVEST**

	1978			1979			1980		
	Grilse	Adults	Totals	Grilse	Adults	Totals	Grilse	Adults	Totals
<b>Angler Harvest</b>									
Klamath River (below Hwy 101 bridge)	122	854	976	216	484	700	835	727	1,562
Trinity River basin (above Willow Creek)	-- d/	-- d/	-- d/	765	1,157	1,922	2,456	998	3,454
Balance of Klamath system	1,960	840	2,800	1,200	500	1,700	2,600	2,771	5,371
Subtotals	<b>2,082</b>	<b>1,694</b>	<b>3,776</b>	<b>2,181</b>	<b>2,141</b>	<b>4,322</b>	<b>5,891</b>	<b>4,496</b>	<b>10,387</b>
<b>Tribal Net Harvest e/</b>									
Klamath River (below Hwy 101 bridge)	--	--	--	--	--	--	495	9,605	10,100
Klamath River (Hwy 101 to Trinity mouth)	--	--	--	--	--	--	272	1,528	1,800
Trinity River (Hoopa Reservation)	--	--	--	--	--	--	220	880	1,100
Subtotals	<b>1,800</b>	<b>18,200</b>	<b>20,000</b>	<b>1,350</b>	<b>13,650</b>	<b>15,000</b>	<b>987</b>	<b>12,013</b>	<b>13,000</b>
<b>Total In-river Harvest</b>	<b>3,882</b>	<b>19,894</b>	<b>23,776</b>	<b>3,531</b>	<b>15,791</b>	<b>19,322</b>	<b>6,878</b>	<b>16,509</b>	<b>23,387</b>

**IN-RIVER RUN**

	1978			1979			1980		
	Grilse	Adults	Totals	Grilse	Adults	Totals	Grilse	Adults	Totals
<b>Totals</b>									
In-river Harvest and Escapement	22,546	91,365	113,911	11,513	50,064	61,577	36,567	44,503	81,070
Angling Mortality (2.04% of harvest) f/	42	35	77	45	44	88	120	92	212
Net Mortality (8.70% of harvest) f/	157	1,583	1,739	117	1,187	1,304	86	1,045	1,130
<b>Total In-river Run</b>	<b>22,745</b>	<b>92,983</b>	<b>115,728</b>	<b>11,675</b>	<b>51,295</b>	<b>62,970</b>	<b>36,773</b>	<b>45,640</b>	<b>82,413</b>

(continued next page)

**Klamath River Basin Fall Chinook Salmon Spawner Escapement, In-river Harvest and Run-size Estimates,  
1978-2021 a/**

**SPAWNER ESCAPEMENT**

	1981			1982			1983		
	Grilse	Adults	Totals	Grilse	Adults	Totals	Grilse	Adults	Totals
<b>Hatchery Spawners</b>									
Iron Gate Hatchery (IGH)	540	2,055	2,595	1,833	8,353	10,186	514	8,371	8,885
Trinity River Hatchery (TRH)	1,004	2,370	3,374	4,235	2,058	6,293	271	5,494	5,765
Subtotals	<b>1,544</b>	<b>4,425</b>	<b>5,969</b>	<b>6,068</b>	<b>10,411</b>	<b>16,479</b>	<b>785</b>	<b>13,865</b>	<b>14,650</b>
<b>Natural Spawners</b>									
Trinity River basin (above Willow Creek, excluding TRH)	5,906	15,340	21,246	8,149	9,274	17,423	853	17,284	18,137
Salmon River basin	450	750	1,200	300	1,000	1,300	75	1,200	1,275
Scott River basin	3,409	3,147	6,556	4,350	5,826	10,176	170	3,398	3,568
Shasta River basin	4,330	7,890	12,220	1,922	6,533	8,455	753	3,119	3,872
Bogus Creek basin	912	2,730	3,642	2,325	4,818	7,143	335	2,713	3,048
Main Stem Klamath River (excluding IGH)	1,000	3,000	4,000	1,000	3,000	4,000	200	1,800	2,000
Misc. Klamath tributaries (above Hoopa and Yurok Reservations)	500	1,000	1,500	600	1,500	2,100	140	1,270	1,410
Hoopa and Yurok Reservation tribs.	-- b/	-- b/	-- b/	-- b/	-- b/	-- b/	-- b/	-- b/	-- b/
Subtotals	<b>16,507</b>	<b>33,857</b>	<b>50,364</b>	<b>18,646</b>	<b>31,951</b>	<b>50,597</b>	<b>2,526</b>	<b>30,784</b>	<b>33,310</b>
<b>Total Spawner Escapement</b>	<b>18,051</b>	<b>38,282</b>	<b>56,333</b>	<b>24,714</b>	<b>42,362</b>	<b>67,076</b>	<b>3,311</b>	<b>44,649</b>	<b>47,960</b>

**IN-RIVER HARVEST**

	1981			1982			1983		
	Grilse	Adults	Totals	Grilse	Adults	Totals	Grilse	Adults	Totals
<b>Angler Harvest</b>									
Klamath River (below Hwy 101 bridge)	536	1,714	2,250	1,252	3,539	4,791	60	750	810
Trinity River basin (above Willow Creek)	1,456	3,174	4,630	2,554	2,321	4,875	116	2,360	2,476
Balance of Klamath system	5,260	1,095	6,355	8,678	2,479	11,157	175	1,125	1,300
Subtotals	<b>7,252</b>	<b>5,983</b>	<b>13,235</b>	<b>12,484</b>	<b>8,339</b>	<b>20,823</b>	<b>351</b>	<b>4,235</b>	<b>4,586</b>
<b>Indian Net Harvest e/</b>									
Klamath River (below Hwy 101 bridge)	912	23,097	24,009	290	4,547	4,837	12	800	812
Klamath River (Hwy 101 to Trinity mouth)	1,104	8,405	9,509	1,195	8,424	9,619	121	5,700	5,821
Trinity River (Hoopa Reservation)	449	1,531	1,980	314	1,511	1,825	30	1,390	1,420
Subtotals	<b>2,465</b>	<b>33,033</b>	<b>35,498</b>	<b>1,799</b>	<b>14,482</b>	<b>16,281</b>	<b>163</b>	<b>7,890</b>	<b>8,053</b>
<b>Total In-river Harvest</b>	<b>9,717</b>	<b>39,016</b>	<b>48,733</b>	<b>14,283</b>	<b>22,821</b>	<b>37,104</b>	<b>514</b>	<b>12,125</b>	<b>12,639</b>

**IN-RIVER RUN**

	1981			1982			1983		
	Grilse	Adults	Totals	Grilse	Adults	Totals	Grilse	Adults	Totals
<b>Totals</b>									
In-river Harvest and Escapement	27,768	77,298	105,066	38,997	65,183	104,180	3,825	56,774	60,599
Angling Mortality (2.04% of harvest) f/	148	122	270	255	170	425	7	86	94
Net Mortality (8.70% of harvest) f/	214	2,872	3,087	156	1,259	1,416	14	686	700
<b>Total In-river Run</b>	<b>28,130</b>	<b>80,292</b>	<b>108,422</b>	<b>39,408</b>	<b>66,612</b>	<b>106,020</b>	<b>3,846</b>	<b>57,546</b>	<b>61,392</b>

(continued next page)

**Klamath River Basin Fall Chinook Salmon Spawner Escapement, In-river Harvest and Run-size Estimates,  
1978-2021 a/**

**SPAWNER ESCAPEMENT**

	1984			1985			1986		
	Grilse	Adults	Totals	Grilse	Adults	Totals	Grilse	Adults	Totals
<b>Hatchery Spawners</b>									
Iron Gate Hatchery (IGH)	764	5,330	6,094	2,159	19,951	22,110	1,461	17,096	18,557
Trinity River Hatchery (TRH)	766	2,166	2,932	18,166	2,583	20,749	3,609	15,795	19,404
Subtotals	<b>1,530</b>	<b>7,496</b>	<b>9,026</b>	<b>20,325</b>	<b>22,534</b>	<b>42,859</b>	<b>5,070</b>	<b>32,891</b>	<b>37,961</b>
<b>Natural Spawners</b>									
Trinity River basin (above Willow Creek, excluding TRH)	3,416	5,654	9,070	29,454	9,217	38,671	20,459	92,548	113,007
Salmon River basin	216 <i>g/</i>	1,226 <i>g/</i>	1,442 <i>g/</i>	905	2,259	3,164	949	2,716	3,665
Scott River basin	358	1,443	1,801	1,357	3,051	4,408	4,865	3,176	8,041
Shasta River basin	480	2,362	2,842	2,227	2,897	5,124	683	3,274	3,957
Bogus Creek basin	465	3,039	3,504	1,156	3,491	4,647	1,184	6,124	7,308
Main Stem Klamath River (excluding IGH)	200	1,350	1,550	156	468	624	196	603	799
Misc. Klamath tributaries (above Hoopa and Yurok Reservations)	150	990	1,140	646	4,214	4,860	606	4,919	5,525
Hoopa and Yurok Reservation tribs.	-- <i>b/</i>	-- <i>b/</i>	-- <i>b/</i>	50 <i>h/</i>	80 <i>h/</i>	130 <i>h/</i>	-- <i>b/</i>	-- <i>b/</i>	-- <i>b/</i>
Subtotals	<b>5,285</b>	<b>16,064</b>	<b>21,349</b>	<b>35,951</b>	<b>25,677</b>	<b>61,628</b>	<b>28,942</b>	<b>113,360</b>	<b>142,302</b>
<b>Total Spawner Escapement</b>	<b>6,815</b>	<b>23,560</b>	<b>30,375</b>	<b>56,276</b>	<b>48,211</b>	<b>104,487</b>	<b>34,012</b>	<b>146,251</b>	<b>180,263</b>

**IN-RIVER HARVEST**

	1984			1985			1986		
	Grilse	Adults	Totals	Grilse	Adults	Totals	Grilse	Adults	Totals
<b>Angler Harvest</b>									
Klamath River (below Hwy 101 bridge)	175	548	723	1,479	2,427 <i>i/</i>	3,906	704	2,456	3,160
Trinity River basin (above Willow Creek)	393	736	1,129	5,442	154 <i>i/</i>	5,596	3,438	12,039	15,477
Balance of Klamath system	384	2,056	2,440	4,274	1,001 <i>i/</i>	5,275	5,266	6,532	11,798
Subtotals	<b>952</b>	<b>3,340</b>	<b>4,292</b>	<b>11,195</b>	<b>3,582 <i>i/</i></b>	<b>14,777</b>	<b>9,408</b>	<b>21,027</b>	<b>30,435</b>
<b>Indian Net Harvest <i>e/</i></b>									
Klamath River (below Hwy 101 bridge)	132	11,878	12,010	132	5,700	5,832	191	15,286	15,477
Klamath River (Hwy 101 to Trinity mouth)	183	5,622	5,805	476	3,925	4,401	377	5,033	5,410
Trinity River (Hoopa Reservation)	140	1,170	1,310	947 <i>y/</i>	1,941 <i>y/</i>	2,888 <i>y/</i>	286	4,808	5,094
Subtotals	<b>455</b>	<b>18,670</b>	<b>19,125</b>	<b>1,555</b>	<b>11,566</b>	<b>13,121</b>	<b>854</b>	<b>25,127</b>	<b>25,981</b>
<b>Total In-river Harvest</b>	<b>1,407</b>	<b>22,010</b>	<b>23,417</b>	<b>12,750</b>	<b>15,148</b>	<b>27,898</b>	<b>10,262</b>	<b>46,154</b>	<b>56,416</b>

**IN-RIVER RUN**

	1984			1985			1986		
	Grilse	Adults	Totals	Grilse	Adults	Totals	Grilse	Adults	Totals
<b>Totals</b>									
In-river Harvest and Escapement	8,222	45,570	53,792	69,026	63,359	132,385	44,274	192,405	236,679
Angling Mortality (2.04% of harvest) <i>f/</i>	19	68	88	228	73	302	192	429	621
Net Mortality (8.70% of harvest) <i>f/</i>	40	1,623	1,663	135	1,006	1,141	74	2,185	2,259
<b>Total In-river Run</b>	<b>8,281</b>	<b>47,261</b>	<b>55,542</b>	<b>69,389</b>	<b>64,438</b>	<b>133,827</b>	<b>44,540</b>	<b>195,019</b>	<b>239,559</b>

(continued next page)

**Klamath River Basin Fall Chinook Salmon Spawner Escapement, In-river Harvest and Run-size Estimates,  
1978-2021 a/**

**SPAWNER ESCAPEMENT**

	1987			1988			1989		
	Grilse	Adults	Totals	Grilse	Adults	Totals	Grilse	Adults	Totals
<b>Hatchery Spawners</b>									
Iron Gate Hatchery (IGH)	1,825	15,189	17,014	609	16,106	16,715	831	10,859	11,690
Trinity River Hatchery (TRH)	2,453	13,934	16,387	4,752	17,352	22,104	239	11,132	11,371
Subtotals	<b>4,278</b>	<b>29,123</b>	<b>33,401</b>	<b>5,361</b>	<b>33,458</b>	<b>38,819</b>	<b>1,070</b>	<b>21,991</b>	<b>23,061</b>
<b>Natural Spawners</b>									
Trinity River basin (above Willow Creek, excluding TRH)	5,949	71,920	77,869	10,626	44,616	55,242	2,543	29,445	31,988
Salmon River basin	118	3,832	3,950	327	3,273	3,600	695	2,915	3,610
Scott River basin	797	7,769	8,566	473	4,727	5,200	1,188	3,000	4,188
Shasta River basin	398	4,299	4,697	256	2,586	2,842	137	1,440	1,577
Bogus Creek basin	1,208	9,748	10,956	225	16,215	16,440	444	2,218	2,662
Main Stem Klamath River (excluding IGH)	65	863	928	164	2,982	3,146	214	1,011	1,225
Misc. Klamath tributaries (above Hoopa and Yurok Reservations)	237	3,286	3,523	418	4,167	4,585	248	3,239	3,487
Hoopa and Yurok Reservation tribs.	-- b/	-- b/	-- b/	55 k/	820 k/	875 k/	40 k/	600 k/	640 k/
Subtotals	<b>8,772</b>	<b>101,717</b>	<b>110,489</b>	<b>12,544</b>	<b>79,386</b>	<b>91,930</b>	<b>5,509</b>	<b>43,868</b>	<b>49,377</b>
<b>Total Spawner Escapement</b>	<b>13,050</b>	<b>130,840</b>	<b>143,890</b>	<b>17,905</b>	<b>112,844</b>	<b>130,749</b>	<b>6,579</b>	<b>65,859</b>	<b>72,438</b>

**IN-RIVER HARVEST**

	1987			1988			1989		
	Grilse	Adults	Totals	Grilse	Adults	Totals	Grilse	Adults	Totals
<b>Angler Harvest</b>									
Klamath River (below Hwy 101 bridge)	146	2,455	2,601	124	3,367	3,491	137	1,328	1,465
Trinity River basin (above Willow Creek)	923	9,433	10,356	2,735	9,341	12,076	209	3,054	3,263
Balance of Klamath system	4,367	8,281	12,648	2,552	9,495	12,047	1,921	4,393	6,314
Subtotals	<b>5,436</b>	<b>20,169</b>	<b>25,605</b>	<b>5,411</b>	<b>22,203</b>	<b>27,614</b>	<b>2,267</b>	<b>8,775</b>	<b>11,042</b>
<b>Indian Net Harvest e/</b>									
Klamath River (below Hwy 101 bridge)	36	39,978	40,014	138	36,914	37,052	0	37,130	37,130
Klamath River (Hwy 101 to Trinity mouth)	117	8,136	8,253	173	9,667	9,840	120	4,961	5,081
Trinity River (Hoopa Reservation)	262	4,982	5,244	267	5,070	5,337	71	3,474	3,545
Subtotals	<b>415</b>	<b>53,096</b>	<b>53,511</b>	<b>578</b>	<b>51,651</b>	<b>52,229</b>	<b>191</b>	<b>45,565</b>	<b>45,756</b>
<b>Total In-river Harvest</b>	<b>5,851</b>	<b>73,265</b>	<b>79,116</b>	<b>5,989</b>	<b>73,854</b>	<b>79,843</b>	<b>2,458</b>	<b>54,340</b>	<b>56,798</b>

**IN-RIVER RUN**

	1987			1988			1989		
	Grilse	Adults	Totals	Grilse	Adults	Totals	Grilse	Adults	Totals
<b>Totals</b>									
In-river Harvest and Escapement	18,901	204,105	223,006	23,894	186,698	210,592	9,037	120,199	129,236
Angling Mortality (2.04% of harvest) f/	111	412	523	110	453	564	46	179	225
Net Mortality (8.70% of harvest) f/	36	4,617	4,653	50	4,491	4,542	17	3,962	3,979
<b>Total In-river Run</b>	<b>19,048</b>	<b>209,134</b>	<b>228,182</b>	<b>24,054</b>	<b>191,642</b>	<b>215,696</b>	<b>9,100</b>	<b>124,340</b>	<b>133,440</b>

(continued next page)

**Klamath River Basin Fall Chinook Salmon Spawner Escapement, In-river Harvest and Run-size Estimates,  
1978-2021 a/**

**SPAWNER ESCAPEMENT**

	1990			1991			1992		
	Grilse	Adults	Totals	Grilse	Adults	Totals	Grilse	Adults	Totals
<b>Hatchery Spawners</b>									
Iron Gate Hatchery (IGH)	321	6,719	7,040	65	4,002	4,067	3,737	3,581	7,318
Trinity River Hatchery (TRH)	371	1,348	1,719	205	2,482	2,687	211	3,779	3,990
Subtotals	<b>692</b>	<b>8,067</b>	<b>8,759</b>	<b>270</b>	<b>6,484</b>	<b>6,754</b>	<b>3,948</b>	<b>7,360</b>	<b>11,308</b>
<b>Natural Spawners</b>									
Trinity River basin (above Willow Creek, excluding TRH)	241	7,682	7,923	382	4,867	5,249	2,563	7,139	9,702
Salmon River basin	596 <i>v</i>	4,071 <i>v</i>	4,667 <i>v</i>	143	1,337	1,480	547	778	1,325
Scott River basin	236	1,379	1,615	146	2,019	2,165	965	1,873	2,838
Shasta River basin	118	415	533	10	716	726	66	520	586
Bogus Creek basin	53	732	785	20	1,261	1,281	556	598	1,154
Main Stem Klamath River (excluding IGH)	59	505	564	8	572	580	234	366	600
Misc. Klamath tributaries (above Hoopa and Yurok Reservations)	30	694	724	9	495	504	153	280	433
Hoopa and Yurok Reservation tribs.	17 <i>k/</i>	118 <i>k/</i>	135 <i>k/</i>	0 <i>k/</i>	382 <i>k/</i>	382 <i>k/</i>	59 <i>k/</i>	474 <i>k/</i>	533 <i>k/</i>
Subtotals	<b>1,350</b>	<b>15,596</b>	<b>16,946</b>	<b>718</b>	<b>11,649</b>	<b>12,367</b>	<b>5,143</b>	<b>12,028</b>	<b>17,171</b>
<b>Total Spawner Escapement</b>	<b>2,042</b>	<b>23,663</b>	<b>25,705</b>	<b>988</b>	<b>18,133</b>	<b>19,121</b>	<b>9,091</b>	<b>19,388</b>	<b>28,479</b>

**IN-RIVER HARVEST**

	1990			1991			1992		
	Grilse	Adults	Totals	Grilse	Adults	Totals	Grilse	Adults	Totals
<b>Angler Harvest</b>									
Klamath River (below Hwy 101 bridge)	58	291	349	19	314	333	13	20	33
Trinity River basin (above Willow Creek)	22	328	350	94	1,177	1,271	158	314	472
Balance of Klamath system	2,020	2,934	4,954	573	1,892	2,465	3,949	668	4,617
Subtotals	<b>2,100</b>	<b>3,553</b>	<b>5,653</b>	<b>686</b>	<b>3,383</b>	<b>4,069</b>	<b>4,120</b>	<b>1,002</b>	<b>5,122</b>
<b>Indian Net Harvest e/</b>									
Klamath River (below Hwy 101 bridge)	13	3,648	3,661	7	3,902	3,909	124	1,152	1,276
Klamath River (Hwy 101 to Trinity mouth)	141	3,447	3,588	25	5,016	5,041	200	3,687	3,887
Trinity River (Hoopa Reservation)	36	811	847	30	1,280	1,310	42	946	988
Subtotals	<b>190</b>	<b>7,906</b>	<b>8,096</b>	<b>62</b>	<b>10,198</b>	<b>10,260</b>	<b>366</b>	<b>5,785</b>	<b>6,151</b>
<b>Total In-river Harvest</b>	<b>2,290</b>	<b>11,459</b>	<b>13,749</b>	<b>748</b>	<b>13,581</b>	<b>14,329</b>	<b>4,486</b>	<b>6,787</b>	<b>11,273</b>

**IN-RIVER RUN**

	1990			1991			1992		
	Grilse	Adults	Totals	Grilse	Adults	Totals	Grilse	Adults	Totals
<b>Totals</b>									
In-river Harvest and Escapement	4,332	35,122	39,454	1,736	31,714	33,450	13,577	26,175	39,752
Angling Mortality (2.04% of harvest) f/	43	73	115	14	69	83	84	20	105
Net Mortality (8.70% of harvest) f/	17	687	704	5	887	892	32	503	535
<b>Total In-river Run</b>	<b>4,392</b>	<b>35,882</b>	<b>40,274</b>	<b>1,755</b>	<b>32,670</b>	<b>34,425</b>	<b>13,693</b>	<b>26,698</b>	<b>40,391</b>

(continued next page)

**Klamath River Basin Fall Chinook Salmon Spawner Escapement, In-river Harvest and Run-size Estimates,  
1978-2021 a/**

**SPAWNER ESCAPEMENT**

	1993			1994			1995		
	Grilse	Adults	Totals	Grilse	Adults	Totals	Grilse	Adults	Totals
<b>Hatchery Spawners</b>									
Iron Gate Hatchery (IGH)	883	20,828	21,711	758	13,808 <sup>m/</sup>	14,566	259	22,681 <sup>m/</sup>	22,940
Trinity River Hatchery (TRH)	736	815	1,551	4,442	3,264	7,706	76	15,178	15,254
Subtotals	<b>1,619</b>	<b>21,643</b>	<b>23,262</b>	<b>5,200</b>	<b>17,072</b>	<b>22,272</b>	<b>335</b>	<b>37,859</b>	<b>38,194</b>
<b>Natural Spawners</b>									
Trinity River basin (above Willow Creek, excluding TRH)	2,465	5,905	8,370	2,505	10,906	13,411	9,262	77,876	87,138
Salmon River basin	456	3,077	3,533	277	3,216	3,493	1,335	4,140	5,475
Scott River basin	265	5,035	5,300	505	2,358	2,863	3,279	11,198	14,477
Shasta River basin	85	1,341	1,426	1,840	3,363	5,203	695	12,816	13,511
Bogus Creek basin	431	3,285	3,716	443	7,817	8,260	1,207	45,225	46,432
Main Stem Klamath River (excluding IGH)	31 <sup>n/</sup>	647 <sup>n/</sup>	678 <sup>n/</sup>	625 <sup>n/</sup>	3,249 <sup>n/</sup>	3,874 <sup>n/</sup>	768 <sup>n/</sup>	6,472 <sup>n/</sup>	7,240 <sup>n/</sup>
Misc. Klamath tributaries (above Hoopa and Yurok Reservations)	92	2,470	2,562	50	1,202	1,252	744 <sup>o/</sup>	3,654 <sup>o/</sup>	4,398 <sup>o/</sup>
Hoopa and Yurok Reservation tribs.	0 <sup>n/</sup>	98 <sup>n/</sup>	98 <sup>n/</sup>	0 <sup>n/</sup>	222 <sup>n/</sup>	222 <sup>n/</sup>	34 <sup>p/</sup>	413 <sup>p/</sup>	447 <sup>p/</sup>
Subtotals	<b>3,825</b>	<b>21,858</b>	<b>25,683</b>	<b>6,245</b>	<b>32,333</b>	<b>38,578</b>	<b>17,324</b>	<b>161,794</b>	<b>179,118</b>
<b>Total Spawner Escapement</b>	<b>5,444</b>	<b>43,501</b>	<b>48,945</b>	<b>11,445</b>	<b>49,405</b>	<b>60,850</b>	<b>17,659</b>	<b>199,653</b>	<b>217,312</b>

**IN-RIVER HARVEST**

	1993			1994			1995		
	Grilse	Adults	Totals	Grilse	Adults	Totals	Grilse	Adults	Totals
<b>Angler Harvest</b>									
Klamath River (below Hwy 101 bridge)	23	669	692	246	662	908	323	956	1,279
Trinity River basin (above Willow Creek)	172	391	563	547	260	807	554	2,779	3,333
Balance of Klamath system	1,730	2,112	3,842	1,763	910	2,673	3,543	2,346 <sup>q/</sup>	5,889
Subtotals	<b>1,925</b>	<b>3,172</b>	<b>5,097</b>	<b>2,556</b>	<b>1,832</b>	<b>4,388</b>	<b>4,420</b>	<b>6,081</b>	<b>10,501</b>
<b>Indian Net Harvest e/</b>									
Klamath River (below Hwy 101 bridge)	62	3,017	3,079	81	4,362	4,443	137	5,119	5,256
Klamath River (Hwy 101 to Trinity mouth)	80	5,127	5,207	118	5,064	5,182	152	7,055	7,207
Trinity River (Hoopa Reservation)	33	1,492	1,525	94	2,266	2,360	268	3,383	3,651
Subtotals	<b>175</b>	<b>9,636</b>	<b>9,811</b>	<b>293</b>	<b>11,692</b>	<b>11,985</b>	<b>557</b>	<b>15,557</b>	<b>16,114</b>
<b>Total In-river Harvest</b>	<b>2,100</b>	<b>12,808</b>	<b>14,908</b>	<b>2,849</b>	<b>13,524</b>	<b>16,373</b>	<b>4,977</b>	<b>21,638</b>	<b>26,615</b>

**IN-RIVER RUN**

	1993			1994			1995		
	Grilse	Adults	Totals	Grilse	Adults	Totals	Grilse	Adults	Totals
<b>Totals</b>									
In-river Harvest and Escapement	7,544	56,309	63,853	14,294	62,929	77,223	22,636	221,291	243,927
Angling Mortality (2.04% of harvest) f/	39	65	104	52	37	90	90	124	214
Net Mortality (8.70% of harvest) f/	15	838	853	25	1,017	1,042	48	1,353	1,401
<b>Total In-river Run</b>	<b>7,598</b>	<b>57,212</b>	<b>64,810</b>	<b>14,371</b>	<b>63,983</b>	<b>78,354</b>	<b>22,774</b>	<b>222,768</b>	<b>245,542</b>

(continued next page)

**Klamath River Basin Fall Chinook Salmon Spawner Escapement, In-river Harvest and Run-size Estimates,  
1978-2021 a/**

**SPAWNER ESCAPEMENT**

	1996			1997			1998		
	Grilse	Adults	Totals	Grilse	Adults	Totals	Grilse	Adults	Totals
<b>Hatchery Spawners</b>									
Iron Gate Hatchery (IGH)	543	13,622	14,165	452	13,275	13,727	403	14,923	15,326
Trinity River Hatchery (TRH)	249	6,411	6,660	820	5,387	6,207	192	14,296	14,488
Subtotals	<b>792</b>	<b>20,033</b>	<b>20,825</b>	<b>1,272</b>	<b>18,662</b>	<b>19,934</b>	<b>595</b>	<b>29,219</b>	<b>29,814</b>
<b>Natural Spawners</b>									
Trinity River basin (above Willow Creek, excluding TRH)	4,478	42,646	47,124	2,845	11,507	14,352	1,974	24,460	26,434
Salmon River basin	274	5,189	5,463	217	5,783	6,000	116	1,337	1,453
Scott River basin	145	11,952	12,097	277	8,284	8,561	266	3,061	3,327
Shasta River basin	46	1,404	1,450	334	1,667	2,001	76	2,466	2,542
Bogus Creek basin	377	10,420	10,797	221	9,809	10,030	205	6,630	6,835
Main Stem Klamath River (excluding IGH)	218 <sup>n/</sup>	2,790 <sup>n/</sup>	3,008 <sup>n/</sup>	104 <sup>n/</sup>	3,472 <sup>n/</sup>	3,576 <sup>n/</sup>	109 <sup>n/</sup>	2,913 <sup>n/</sup>	3,022 <sup>n/</sup>
Misc. Klamath-Trinity tributaries (above Hoopa and Yurok Reservations)	581 <sup>o/</sup>	5,804 <sup>o/</sup>	6,385 <sup>o/</sup>	174 <sup>o/</sup>	5,174 <sup>o/</sup>	5,348 <sup>o/</sup>	83 <sup>o/</sup>	1,232 <sup>o/</sup>	1,315 <sup>o/</sup>
Hoopa and Yurok Reservation tribs.	55 <sup>p/</sup>	1,121 <sup>p/</sup>	1,176 <sup>p/</sup>	53 <sup>p/</sup>	448 <sup>p/</sup>	501 <sup>p/</sup>	26 <sup>p/</sup>	389 <sup>p/</sup>	415 <sup>p/</sup>
Subtotals	<b>6,174</b>	<b>81,326</b>	<b>87,500</b>	<b>4,225</b>	<b>46,144</b>	<b>50,369</b>	<b>2,855</b>	<b>42,488</b>	<b>45,343</b>
<b>Total Spawner Escapement</b>	<b>6,966</b>	<b>101,359</b>	<b>108,325</b>	<b>5,497</b>	<b>64,806</b>	<b>70,303</b>	<b>3,450</b>	<b>71,707</b>	<b>75,157</b>

**IN-RIVER HARVEST**

	1996			1997			1998		
	Grilse	Adults	Totals	Grilse	Adults	Totals	Grilse	Adults	Totals
<b>Angler Harvest</b>									
Klamath River (below Hwy 101 bridge)	100	3,110	3,210	49	2,182	2,231	124	1,603	1,727
Klamath River (Hwy 101 to Coon Cr Falls)	1,128	4,052	5,180	1,226	512	1,738	406	1,270	1,676
Trinity River basin (above Willow Creek)	331	1,214	1,545 <sup>r/</sup>	353	1,331	1,684 <sup>s/</sup>	275	3,262	3,537 <sup>w/</sup>
Balance of Klamath system	753	4,390	5,143	781	1,651	2,432 <sup>t/</sup>	303	1,575	1,878 <sup>v/</sup>
Subtotals	<b>2,312</b>	<b>12,766</b>	<b>15,078</b>	<b>2,409</b>	<b>5,676</b>	<b>8,085</b>	<b>1,108</b>	<b>7,710 <sup>x/</sup></b>	<b>8,818</b>
<b>Indian Net Harvest <sup>e/</sup></b>									
Klamath River (below Hwy 101 bridge)	163	49,113	49,276	21	5,574	5,595	16	3,454	3,470
Klamath River (Hwy 101 to Trinity mouth)	19	4,593	4,612	8	5,275	5,283	32	5,198	5,230
Trinity River (Hoopa Reservation)	8	2,770	2,778	6	1,238	1,244	5	1,535	1,540
Subtotals	<b>190</b>	<b>56,476</b>	<b>56,666</b>	<b>35</b>	<b>12,087</b>	<b>12,122</b>	<b>53</b>	<b>10,187</b>	<b>10,240</b>
<b>Total In-river Harvest</b>	<b>2,502</b>	<b>69,242</b>	<b>71,744</b>	<b>2,444</b>	<b>17,763</b>	<b>20,207</b>	<b>1,161</b>	<b>17,897</b>	<b>19,058</b>

**IN-RIVER RUN**

	1996			1997			1998		
	Grilse	Adults	Totals	Grilse	Adults	Totals	Grilse	Adults	Totals
<b>Totals</b>									
In-river Harvest and Escapement	9,468	170,601	180,069	7,941	82,569	90,510	4,611	89,604	94,215
Angling Mortality (2.04% of harvest) <sup>f/</sup>	47	261	308	49	116	165	23	157	180
Net Mortality (8.70% of harvest) <sup>f/</sup>	17	4,911	4,927	3	1,051	1,054	5	886	890
<b>Total In-river Run</b>	<b>9,532</b>	<b>175,773</b>	<b>185,305</b>	<b>7,993</b>	<b>83,736</b>	<b>91,729</b>	<b>4,639</b>	<b>90,647</b>	<b>95,286</b>

(continued next page)

**Klamath River Basin Fall Chinook Salmon Spawner Escapement, In-river Harvest and Run-size Estimates,  
1978-2021 a/**

**SPAWNER ESCAPEMENT**

	1999			2000			2001		
	Grilse	Adults	Totals	Grilse	Adults	Totals	Grilse	Adults	Totals
<b>Hatchery Spawners</b>									
Iron Gate Hatchery (IGH)	4,830	9,290	14,120	839	71,635	72,474	1,364	37,204	38,568
Trinity River Hatchery (TRH)	2,027	5,037	7,064	1,070	25,976	27,046	267	17,908	18,175
<b>Hatchery Spawner Subtotals:</b>	<b>6,857</b>	<b>14,327</b>	<b>21,184</b>	<b>1,909</b>	<b>97,611</b>	<b>99,520</b>	<b>1,631</b>	<b>55,112</b>	<b>56,743</b>
<b>Natural Spawners</b>									
Main Stem Klamath River n/ (excluding IGH)	630	1,978	2,608	184	3,271	3,455	1,016	9,832	10,848
Salmon River basin	110	670	780	228	1,544	1,772	743	2,607	3,350
Scott River basin	563	3,021	3,584	524	5,729	6,253	744	5,398	6,142
Shasta River basin	1,901	1,296	3,197	1,271	11,025	12,296	2,641	8,452	11,093
Bogus Creek basin	2,628	3,537	6,165	373	34,678	35,051	648	11,927	12,575
Misc. Klamath tributaries o/ (above Yurok Reservation)	251	777	1,028	158	1,345	1,503	538	2,240	2,778
Yurok Reservation tribs. (Klamath River) p/	210	381	591	153	796	949	48	488	536
<b>Klamath Natural Spawner Subtotals:</b>	<b>6,293</b>	<b>11,660</b>	<b>17,953</b>	<b>2,891</b>	<b>58,388</b>	<b>61,279</b>	<b>6,378</b>	<b>40,944</b>	<b>47,322</b>
Main Stem Trinity River dd/ (excluding TRH)	4,154	6,753	10,907	3,376	23,468	26,844	1,336	35,991	37,327 cc/
Misc. Trinity tributaries o/ (above Hoopa Reservation)				103	706	809	27	729	756
Hoopa Reservation tribs. (Trinity River) p/	0	44	44	24	166	190	6	170	176
<b>Trinity Natural Spawner Subtotals:</b>	<b>4,154</b>	<b>6,797</b>	<b>10,951</b>	<b>3,503</b>	<b>24,340</b>	<b>27,843</b>	<b>1,369</b>	<b>36,890</b>	<b>38,259</b>
<b>Natural Spawner Subtotals</b>	<b>10,447</b>	<b>18,457</b>	<b>28,904</b>	<b>6,394</b>	<b>82,728</b>	<b>89,122</b>	<b>7,747</b>	<b>77,834</b>	<b>85,581</b>
<b>Total Spawner Escapement</b>	<b>17,304</b>	<b>32,784</b>	<b>50,088</b>	<b>8,303</b>	<b>180,339</b>	<b>188,642</b>	<b>9,378</b>	<b>132,946</b>	<b>142,324</b>

**IN-RIVER HARVEST**

	1999			2000			2001		
	Grilse	Adults	Totals	Grilse	Adults	Totals	Grilse	Adults	Totals
<b>Angler Harvest</b>									
Klamath River (below Hwy 101 bridge)	37	177	214	108	1,190	1,298	298	4,620	4,918
Klamath River (Hwy 101 to Coon Cr Falls)	869 y/	1,112 y/	1,981 y/	972	1,006	1,978	825	1,960	2,785
Klamath River (Coon Cr Falls to IGH)	138 z/	571 z/	709 z/	117	1,549	1,666 bb/	242	3,041	3,283
Trinity River basin above Weitchpec aa/	572	422	994	385	1,905	2,290	135	2,513	2,648
<b>Angler Harvest Subtotals:</b>	<b>1,616</b>	<b>2,282</b>	<b>3,898</b>	<b>1,582</b>	<b>5,650</b>	<b>7,232</b>	<b>1,500</b>	<b>12,134</b>	<b>13,634</b>
<b>Indian Net Harvest e/</b>									
Klamath River (below Hwy 101 bridge)	126	4,387	4,513	35	17,278	17,313	261	28,967	29,228
Klamath River (Hwy 101 to Trinity mouth)	49	7,295	7,344	140	6,175	6,315	78	4,724	4,802
Trinity River (Hoopa Reservation)	96	2,978	3,074	128	5,962	6,090	60	4,954	5,014
<b>Indian Net Harvest Subtotals:</b>	<b>271</b>	<b>14,660</b>	<b>14,931</b>	<b>303</b>	<b>29,415</b>	<b>29,718</b>	<b>399</b>	<b>38,645</b>	<b>39,044</b>
<b>Total In-river Harvest</b>	<b>1,887</b>	<b>16,942</b>	<b>18,829</b>	<b>1,885</b>	<b>35,065</b>	<b>36,950</b>	<b>1,899</b>	<b>50,779</b>	<b>52,678</b>

**IN-RIVER RUN**

	1999			2000			2001		
	Grilse	Adults	Totals	Grilse	Adults	Totals	Grilse	Adults	Totals
<b>Totals</b>									
In-river Harvest and Escapement	19,191	49,726	68,917	10,188	215,404	225,592	11,277	183,725	195,002
Angling Mortality (2.04% of harvest) f/	33	47	80	32	115	148	31	248	278
Net Mortality (8.70% of harvest) f/	24	1,275	1,298	26	2,558	2,584	35	3,360	3,395
<b>Total In-river Run</b>	<b>19,248</b>	<b>51,048</b>	<b>70,296</b>	<b>10,246</b>	<b>218,077</b>	<b>228,323</b>	<b>11,343</b>	<b>187,333</b>	<b>198,676</b>



**Klamath River Basin Fall Chinook Salmon Spawner Escapement, In-river Harvest and Run-size Estimates,  
1978-2021 a/**

**SPAWNER ESCAPEMENT**

	2002			2003			2004		
	Grilse	Adults	Totals	Grilse	Adults	Totals	Grilse	Adults	Totals
<b>Hatchery Spawners</b>									
Iron Gate Hatchery (IGH)	1,294	23,667	24,961	290	31,970	32,260	937	10,582	11,519
Trinity River Hatchery (TRH)	1,037	3,516	4,553	574	29,812	30,386	1,044	12,399	13,443
<b>Hatchery Spawner Subtotals:</b>	<b>2,331</b>	<b>27,183</b>	<b>29,514</b>	<b>864</b>	<b>61,782</b>	<b>62,646</b>	<b>1,981</b>	<b>22,981</b>	<b>24,962</b>
<b>Natural Spawners</b>									
Main Stem Klamath River n/ (excluding IGH)	658	21,650	22,308	298	17,722	18,020	205	5,037	5,242
Salmon River basin	78	2,669	2,747	73	3,302	3,375	51	282	333
Scott River basin	47	4,261	4,308	65	11,988	12,053	22	445	467
Shasta River basin	386	6,432	6,818	155	4,134	4,289	129	833	962
Bogus Creek basin	304	17,530	17,834	188	15,422	15,610	295	3,493	3,788
Misc. Klamath tributaries o/ (above Yurok Reservation)	44	1,344	1,388	38	1,761	1,799	80	477	557
Yurok Reservation tribs. (Klamath River) p/	12	339	351	31	1,094	1,125	64	144	208
<b>Klamath Natural Spawner Subtotals:</b>	<b>1,529</b>	<b>54,225</b>	<b>55,754</b>	<b>848</b>	<b>55,423</b>	<b>56,271</b>	<b>846</b>	<b>10,711</b>	<b>11,557</b>
Main Stem Trinity River dd/ (excluding TRH)	2,230	10,880	13,110	1,065	31,173	32,238	3,722	12,718	16,440
Misc. Trinity tributaries o/ (above Hoopa Reservation)	66	324	390	109	602	711	75	258	333
Hoopa Reservation tribs. (Trinity River) p/	42	206	248	80	444	524	42	144	186
<b>Trinity Natural Spawner Subtotals:</b>	<b>2,338</b>	<b>11,410</b>	<b>13,748</b>	<b>1,254</b>	<b>32,219</b>	<b>33,473</b>	<b>3,839</b>	<b>13,120</b>	<b>16,959</b>
<b>Natural Spawner Subtotals</b>	<b>3,867</b>	<b>65,635</b>	<b>69,502</b>	<b>2,102</b>	<b>87,642</b>	<b>89,744</b>	<b>4,685</b>	<b>23,831</b>	<b>28,516</b>
<b>Total Spawner Escapement</b>	<b>6,198</b>	<b>92,818</b>	<b>99,016</b>	<b>2,966</b>	<b>149,424</b>	<b>152,390</b>	<b>6,666</b>	<b>46,812</b>	<b>53,478</b>

**IN-RIVER HARVEST**

	2002			2003			2004		
	Grilse	Adults	Totals	Grilse	Adults	Totals	Grilse	Adults	Totals
<b>Angler Harvest</b>									
Klamath River (below Hwy 101 bridge)	274	3,285	3,559	180	1,589	1,769	748	725	1,473
Klamath River (Hwy 101 to Coon Cr Falls)	284	3,268	3,552	369	3,336	3,705	1,493	1,472	2,965
Klamath River (Coon Cr Falls to IGH)	93	3,216	3,309	40	2,397	2,437	52	1,266	1,318
Trinity River basin above Weitchpec aa/	219	726	945	225	2,358	2,583	448	540	988
<b>Angler Harvest Subtotals:</b>	<b>870</b>	<b>10,495</b>	<b>11,365</b>	<b>814</b>	<b>9,680</b>	<b>10,494</b>	<b>2,741</b>	<b>4,003</b>	<b>6,744</b>
<b>Indian Net Harvest e/</b>									
Klamath River (below Hwy 101 bridge)	17	20,149	20,166	15	22,688	22,703	75	21,037	21,112
Klamath River (Hwy 101 to Trinity mouth)	41	3,257	3,298	17	4,575	4,592	73	3,077	3,150
Trinity River (Hoopa Reservation)	68	1,168	1,236	12	2,771	2,783	20	1,689	1,709
<b>Indian Net Harvest Subtotals:</b>	<b>126</b>	<b>24,574</b>	<b>24,700</b>	<b>44</b>	<b>30,034</b>	<b>30,078</b>	<b>168</b>	<b>25,803</b>	<b>25,971</b>
<b>Total In-river Harvest</b>	<b>996</b>	<b>35,069</b>	<b>36,065</b>	<b>858</b>	<b>39,714</b>	<b>40,572</b>	<b>2,909</b>	<b>29,806</b>	<b>32,715</b>

**IN-RIVER RUN**

	2002			2003			2004		
	Grilse	Adults	Totals	Grilse	Adults	Totals	Grilse	Adults	Totals
<b>Totals</b>									
In-river Harvest and Escapement	7,194	127,887	135,081	3,824	189,138	192,962	9,575	76,618	86,193
Angling Mortality (2.04% of harvest) f/	18	214	232	17	198	214	56	82	138
Net Mortality (8.70% of harvest) f/	11	2,137	2,148	4	2,612	2,615	15	2,244	2,258
Fish Die Off ee/	2,003	30,550	32,553						
<b>Total In-river Run</b>	<b>9,226</b>	<b>160,788</b>	<b>170,014</b>	<b>3,845</b>	<b>191,948</b>	<b>195,791</b>	<b>9,646</b>	<b>78,944</b>	<b>88,589</b>

**Klamath River Basin Fall Chinook Salmon Spawner Escapement, In-river Harvest and Run-size Estimates,  
1978-2021 a/**

**SPAWNER ESCAPEMENT**

	2005			2006			2007		
	Grilse	Adults	Totals	Grilse	Adults	Totals	Grilse	Adults	Totals
<b>Hatchery Spawners</b>									
Iron Gate Hatchery (IGH)	42	13,955	13,997	2,386	11,604	13,990	180	16,969	17,149
Trinity River Hatchery (TRH)	59	13,744	13,803	4,076	7,918	11,994	33	18,081	18,114
<b>Hatchery Spawner Subtotals:</b>	<b>101</b>	<b>27,699</b>	<b>27,800</b>	<b>6,462</b>	<b>19,522</b>	<b>25,984</b>	<b>213</b>	<b>35,050</b>	<b>35,263</b>
<b>Natural Spawners</b>									
Main Stem Klamath River n/ (excluding IGH)	32	4,622	4,654	853	4,538	5,391	41	6,914	6,955
Salmon River basin	105	401	506	791	1,278	2,069	55	1,377	1,432
Scott River basin	58	698	756	1,953	3,007	4,960	11	4,494	4,505
Shasta River basin	37	2,018	2,055	1,395	789	2,184	27	2,009	2,036
Bogus Creek basin	58	5,341	5,399	765	3,368	4,133	64	4,677	4,741
Misc. Klamath tributaries o/ (above Yurok Reservation)	40	361	401	739	1,165	1,904	26	1,414	1,440
Yurok Reservation tribs. (Klamath River) p/	68	113	181	20	119	139	8	407	415
<b>Klamath Natural Spawner Subtotals:</b>	<b>398</b>	<b>13,554</b>	<b>13,952</b>	<b>6,516</b>	<b>14,264</b>	<b>20,780</b>	<b>232</b>	<b>21,292</b>	<b>21,524</b>
Main Stem Trinity River dd/ (excluding TRH)	658	12,987	13,645	7,607	15,375	22,982	832	39,038	39,870
Misc. Trinity tributaries o/ (above Hoopa Reservation)	8	164	172	71	142	213	5	246	251
Hoopa Reservation tribs. (Trinity River) p/	4	84	88	189	382	571	2	94	96
<b>Trinity Natural Spawner Subtotals:</b>	<b>670</b>	<b>13,235</b>	<b>13,905</b>	<b>7,867</b>	<b>15,899</b>	<b>23,766</b>	<b>839</b>	<b>39,378</b>	<b>40,217</b>
<b>Natural Spawner Subtotals</b>	<b>1,068</b>	<b>26,789</b>	<b>27,857</b>	<b>14,383</b>	<b>30,163</b>	<b>44,546</b>	<b>1,071</b>	<b>60,670</b>	<b>61,741</b>
<b>Total Spawner Escapement</b>	<b>1,169</b>	<b>54,488</b>	<b>55,657</b>	<b>20,845</b>	<b>49,685</b>	<b>70,530</b>	<b>1,284</b>	<b>95,720</b>	<b>97,004</b>

**IN-RIVER HARVEST**

	2005			2006			2007		
	Grilse	Adults	Totals	Grilse	Adults	Totals	Grilse	Adults	Totals
<b>Angler Harvest</b>									
Klamath River (below Hwy 101 bridge)	311	243	554	60	1	61	20	1,097	1,117
Klamath River (Hwy 101 to Weitchpec)	595	468	1,063	4,421	38	4,459	218	2,211	2,429
Klamath River (Weitchpec to IGH)	6	318	324	721	18	739	19	1,667	1,686
Trinity River basin above Weitchpec aa/	118	956	1,074	325	5	330	112	1,337	1,449
<b>Angler Harvest Subtotals:</b>	<b>1,030</b>	<b>1,985</b>	<b>3,015</b>	<b>5,527</b>	<b>62</b> <sup>ff</sup>	<b>5,589</b>	<b>369</b>	<b>6,312</b>	<b>6,681</b>
<b>Indian Net Harvest e/</b>									
Klamath River (below Hwy 101 bridge)	21	2,293	2,314	30	2,726	2,756	16	23,475	23,491
Klamath River (Hwy 101 to Trinity mouth)	38	3,314	3,352	240	3,396	3,636	5	1,800	1,805
Trinity River (Hoopa Reservation)	11	2,409	2,420	145	4,161	4,306	0	2,298	2,298
<b>Indian Net Harvest Subtotals:</b>	<b>70</b>	<b>8,016</b>	<b>8,086</b>	<b>415</b>	<b>10,283</b>	<b>10,698</b>	<b>21</b>	<b>27,573</b>	<b>27,594</b>
<b>Total In-river Harvest</b>	<b>1,100</b>	<b>10,001</b>	<b>11,101</b>	<b>5,942</b>	<b>10,345</b>	<b>16,287</b>	<b>390</b>	<b>33,885</b>	<b>34,275</b>

**IN-RIVER RUN**

	2005			2006			2007		
	Grilse	Adults	Totals	Grilse	Adults	Totals	Grilse	Adults	Totals
<b>Totals</b>									
In-river Harvest and Escapement	2,269	64,489	66,758	26,787	60,030	86,817	1,674	129,605	131,279
Angling Mortality (2.04% of harvest) f/	21	41	62	113	76	189	8	129	136
Net Mortality (8.70% of harvest) f/	6	697	703	36	894	930	2	2,397	2,399
Catch and Release Mortality gg/				0	373	373			
<b>Total In-river Run</b>	<b>2,296</b>	<b>65,227</b>	<b>67,523</b>	<b>26,936</b>	<b>61,373</b>	<b>88,309</b>	<b>1,684</b>	<b>132,131</b>	<b>133,815</b>

**Klamath River Basin Fall Chinook Salmon Spawner Escapement, In-river Harvest and Run-size Estimates,  
1978-2021 a/**

**SPAWNER ESCAPEMENT**

	2008			2009			2010		
	Grilse	Adults	Totals	Grilse	Adults	Totals	Grilse	Adults	Totals
<b>Hatchery Spawners</b>									
Iron Gate Hatchery (IGH)	2,130	9,101	11,231	1,229	12,263	13,492	1,069	10,278	11,347
Trinity River Hatchery (TRH)	801	4,451	5,252	143	7,351	7,494	1,432	7,774	9,206
<b>Hatchery Spawner Subtotals:</b>	<b>2,931</b>	<b>13,552</b>	<b>16,483</b>	<b>1,372</b>	<b>19,614</b>	<b>20,986</b>	<b>2,501</b>	<b>18,052</b>	<b>20,553</b>
<b>Natural Spawners</b>									
Main Stem Klamath River n/ (excluding IGH)	1,199	5,830	7,029	295	7,945	8,240	275	3,684	3,959
Salmon River basin	650	1,749	2,399	516	2,204 <sup>hhv</sup>	2,720	356	2,478 <sup>hhv</sup>	2,834
Scott River basin	1,228	3,445	4,673	44	2,167	2,211	394	2,114	2,508
Shasta River basin	3,621	2,741	6,362	151	6,145	6,296	87	1,261	1,348
Bogus Creek basin	1,565	3,001	4,566	471	5,455	5,926	291	3,180	3,471
Misc. Klamath tributaries o/ (above Yurok Reservation)	1,073	1,845	2,918	175	3,094	3,269	274	1,663	1,937
Yurok Reservation tribs. (Klamath River) p/	89	409	498	296	733	1,029	134	790	924
<b>Klamath Natural Spawner Subtotals:</b>	<b>9,425</b>	<b>19,020</b>	<b>28,445</b>	<b>1,948</b>	<b>27,743</b>	<b>29,691</b>	<b>1,811</b>	<b>15,170</b>	<b>16,981</b>
Main Stem Trinity River dd/ (excluding TRH)	7,255	11,006	18,261	5,958	16,168	22,126	9,779	21,579	31,358
Misc. Trinity tributaries o/ (above Hoopa Reservation)	158	240	398	70	190	260	69	152	221
Hoopa Reservation tribs. (Trinity River) p/	385	584	969	114	308	422	147	324	471
<b>Trinity Natural Spawner Subtotals:</b>	<b>7,798</b>	<b>11,830</b>	<b>19,628</b>	<b>6,142</b>	<b>16,666</b>	<b>22,808</b>	<b>9,995</b>	<b>22,055</b>	<b>32,050</b>
<b>Natural Spawner Subtotals</b>	<b>17,223</b>	<b>30,850</b>	<b>48,073</b>	<b>8,090</b>	<b>44,409</b>	<b>52,499</b>	<b>11,806</b>	<b>37,225</b>	<b>49,031</b>
<b>Total Spawner Escapement</b>	<b>20,154</b>	<b>44,402</b>	<b>64,556</b>	<b>9,462</b>	<b>64,023</b>	<b>73,485</b>	<b>14,307</b>	<b>55,277</b>	<b>69,584</b>

**IN-RIVER HARVEST**

	2008			2009			2010		
	Grilse	Adults	Totals	Grilse	Adults	Totals	Grilse	Adults	Totals
<b>Angler Harvest</b>									
Klamath River (below Hwy 101 bridge)	521	141	662	319	1,191	1,510	162	510	672
Klamath River (Hwy 101 to Weitchpec)	3,358	896	4,254	1,559	2,015	3,574	1,320	1,225	2,545
Klamath River (Weitchpec to IGH)	160	523	683	155	1,614	1,769	88	875	963
Trinity River basin above Weitchpec aa/	269	359	628	181	831	1,012	261	425	686
<b>Angler Harvest Subtotals:</b>	<b>4,308</b>	<b>1,919</b>	<b>6,227</b>	<b>2,214</b>	<b>5,651</b>	<b>7,865</b>	<b>1,831</b>	<b>3,035</b>	<b>4,866</b>
<b>Indian Net Harvest e/</b>									
Klamath River (below Hwy 101 bridge)	302	17,710	18,012	43	19,465	19,508	20	21,725	21,745
Klamath River (Hwy 101 to Trinity mouth)	187	2,636	2,823	39	4,769	4,808	156	4,461	4,617
Trinity River (Hoopa Reservation)	152	1,913	2,065	96	4,153	4,249	252	3,701	3,953
<b>Indian Net Harvest Subtotals:</b>	<b>641</b>	<b>22,259</b>	<b>22,900</b>	<b>178</b>	<b>28,387</b>	<b>28,565</b>	<b>428</b>	<b>29,887</b>	<b>30,315</b>
<b>Total In-river Harvest</b>	<b>4,949</b>	<b>24,178</b>	<b>29,127</b>	<b>2,392</b>	<b>34,038</b>	<b>36,430</b>	<b>2,259</b>	<b>32,922</b>	<b>35,181</b>

**IN-RIVER RUN**

	2008			2009			2010		
	Grilse	Adults	Totals	Grilse	Adults	Totals	Grilse	Adults	Totals
<b>Totals</b>									
In-river Harvest and Escapement	25,103	68,580	93,683	11,854	98,061	109,915	16,566	88,199	104,765
Angling Mortality (2.04% of harvest) f/	88	39	127	45	115	161	37	62	99
Net Mortality (8.70% of harvest) f/	56	1,935	1,991	15	2,468	2,484	37	2,599	2,636
<b>Total In-river Run</b>	<b>25,247</b>	<b>70,554</b>	<b>95,801</b>	<b>11,914</b>	<b>100,644</b>	<b>112,558</b>	<b>16,640</b>	<b>90,860</b>	<b>107,500</b>

(continued next page)

**Klamath River Basin Fall Chinook Salmon Spawner Escapement, In-river Harvest and Run-size Estimates,  
1978-2021 a/**

**SPAWNER ESCAPEMENT**

	2011			2012			2013		
	Grilse	Adults	Totals	Grilse	Adults	Totals	Grilse	Adults	Totals
<b>Hatchery Spawners</b>									
Iron Gate Hatchery (IGH)	9,549	8,490	18,039	1,537	38,478	40,015	1,323	13,431	14,754
Trinity River Hatchery (TRH)	1,875	13,847	15,722	92	17,461	17,553	135	3,717	3,852
<b>Hatchery Spawner Subtotals:</b>	<b>11,424</b>	<b>22,337</b>	<b>33,761</b>	<b>1,629</b>	<b>55,939</b>	<b>57,568</b>	<b>1,458</b>	<b>17,148</b>	<b>18,606</b>
<b>Natural Spawners</b>									
Main Stem Klamath River n/ (excluding IGH)	3,270	3,933	7,203	1,859	18,249	20,108	683	12,192	12,875
Salmon River basin	1,819	3,674	5,493	829	3,561	4,390	240	2,240	2,480
Scott River basin	2,502	3,019	5,521	1,783	7,569	9,352	588	4,036	4,624
Shasta River basin	11,175	213	11,388	1,944	27,600	29,544	1,096	6,925	8,021
Bogus Creek basin	2,303	2,919	5,222	839	11,792	12,631	338	3,682	4,020
Misc. Klamath tributaries o/ii/ (above Yurok Reservation)	3,259	3,072	6,331	629	3,254	3,883	200	2,310	2,510
Yurok Reservation tribs. (Klamath River) p/	418	1,143	1,561	406	761	1,167	129	326	455
<b>Klamath Natural Spawner Subtotals:</b>	<b>24,746</b>	<b>17,973</b>	<b>42,719</b>	<b>8,289</b>	<b>72,786</b>	<b>81,075</b>	<b>3,274</b>	<b>31,711</b>	<b>34,985</b>
Main Stem Trinity River dd/ (excluding TRH)	36,913	27,718	64,631	7,242	47,921	55,163	6,954	27,127	34,081
Misc. Trinity tributaries o/ (above Hoopa Reservation)	96	542	638	79	520	599	20	78	98
Hoopa Reservation tribs. (Trinity River) p/	94	530	624	48	316	364	62	240	302
<b>Trinity Natural Spawner Subtotals:</b>	<b>37,103</b>	<b>28,790</b>	<b>65,893</b>	<b>7,369</b>	<b>48,757</b>	<b>56,126</b>	<b>7,036</b>	<b>27,445</b>	<b>34,481</b>
<b>Natural Spawner Subtotals</b>	<b>61,849</b>	<b>46,763</b>	<b>108,612</b>	<b>15,658</b>	<b>121,543</b>	<b>137,201</b>	<b>10,310</b>	<b>59,156</b>	<b>69,466</b>
<b>Total Spawner Escapement</b>	<b>73,273</b>	<b>69,100</b>	<b>142,373</b>	<b>17,287</b>	<b>177,482</b>	<b>194,769</b>	<b>11,768</b>	<b>76,304</b>	<b>88,072</b>

**IN-RIVER HARVEST**

	2011			2012			2013		
	Grilse	Adults	Totals	Grilse	Adults	Totals	Grilse	Adults	Totals
<b>Angler Harvest</b>									
Klamath River (below Hwy 101 bridge)	700	624	1,324	382	2,696	3,078	546	11,272	11,818
Klamath River (Hwy 101 to Weitchpec)	6,557	912	7,469	3,183	5,174	8,357	1,135	1,113	2,248
Klamath River (Weitchpec to IGH)	1,481	1,483	2,964	243	3,967	4,210	531	6,243	6,774
Trinity River basin above Weitchpec aa/	1,243	1,128	2,371	67	2,039	2,106	48	1,172	1,220
<b>Angler Harvest Subtotals:</b>	<b>9,981</b>	<b>4,147</b>	<b>14,128</b>	<b>3,875</b>	<b>13,876</b>	<b>17,751</b>	<b>2,260</b>	<b>19,800</b>	<b>22,060</b>
<b>Tribal Harvest e/</b>									
Klamath River (below Hwy 101 bridge)	429	17,218	17,647	68	87,747	87,815	205	57,504	57,709
Klamath River (Hwy 101 to Trinity mouth)	467	4,272	4,739	54	3,494	3,548	38	2,513	2,551
Trinity River (Hoopa Reservation)	426	4,863	5,289	55	4,145	4,200	16	3,019	3,035
<b>Tribal Harvest Subtotals:</b>	<b>1,322</b>	<b>26,353</b>	<b>27,675</b>	<b>177</b>	<b>95,386</b>	<b>95,563</b>	<b>259</b>	<b>63,036</b>	<b>63,295</b>
<b>Total In-river Harvest</b>	<b>11,303</b>	<b>30,500</b>	<b>41,803</b>	<b>4,052</b>	<b>109,262</b>	<b>113,314</b>	<b>2,519</b>	<b>82,836</b>	<b>85,355</b>

**IN-RIVER RUN**

	2011			2012			2013		
	Grilse	Adults	Totals	Grilse	Adults	Totals	Grilse	Adults	Totals
<b>Totals</b>									
In-river Harvest and Escapement	84,576	99,600	184,176	21,339	286,744	308,083	14,287	159,140	173,427
Angling Mortality (2.04% of harvest) f/	204	85	288	79	283	362	46	404	450
Net Mortality (8.70% of harvest) f/	115	2,292	2,407	15	8,294	8,310	23	5,481	5,504
<b>Total In-river Run</b>	<b>84,895</b>	<b>101,977</b>	<b>186,872</b>	<b>21,433</b>	<b>295,321</b>	<b>316,754</b>	<b>14,356</b>	<b>165,025</b>	<b>179,381</b>

(continued next page)

**Klamath River Basin Fall Chinook Salmon Spawner Escapement, In-river Harvest and Run-size Estimates,  
1978-2021 a/**

**SPAWNER ESCAPEMENT**

	2014			2015			2016		
	Grilse	Adults	Totals	Grilse	Adults	Totals	Grilse	Adults	Totals
<b>Hatchery Spawners</b>									
Iron Gate Hatchery (IGH)	1,039	24,300	25,339	220	7,956	8,176	151	2,436	2,587
Trinity River Hatchery (TRH)	221	6,975	7,196	224	3,129	3,353	401	1,142	1,543
<b>Hatchery Spawner Subtotals:</b>	<b>1,260</b>	<b>31,275</b>	<b>32,535</b>	<b>444</b>	<b>11,085</b>	<b>11,529</b>	<b>552</b>	<b>3,578</b>	<b>4,130</b>
<b>Natural Spawners</b>									
Main Stem Klamath River n/ (excluding IGH)	1,844	22,443	24,287	259	7,407	7,666	159	2,902	3,061
Salmon River basin	527	2,706	3,233	92	1,978	2,070	26	1,032 hh/	1,058
Scott River basin	2,051	10,419	12,470	21	2,092	2,113	139	1,376	1,515
Shasta River basin	3,945	14,412	18,357	133	6,612	6,745	135	2,754	2,889
Bogus Creek basin	323	12,607	12,930	45	2,308	2,353	38	830	868
Misc. Klamath tributaries o/ (above Yurok Reservation)	1,498	6,877	8,375	49	2,244	2,293	30	1,218	1,248
Yurok Reservation tribs. (Klamath River) p/	332	1,245	1,577	149	632	781	27	264	291
<b>Klamath Natural Spawner Subtotals:</b>	<b>10,520</b>	<b>70,709</b>	<b>81,229</b>	<b>748</b>	<b>23,273</b>	<b>24,021</b>	<b>554</b>	<b>10,376</b>	<b>10,930</b>
Main Stem Trinity River dd/ (excluding TRH)	6,620	23,312	29,932	2,660	4,727	7,387	1,295	3,444	4,739
Misc. Trinity tributaries o/ (above Hoopa Reservation)	47	515	562	26	46	72	21	55	76
Hoopa Reservation tribs. (Trinity River) p/	52	568	620	38	66	104	24	62	86
<b>Trinity Natural Spawner Subtotals:</b>	<b>6,719</b>	<b>24,395</b>	<b>31,114</b>	<b>2,724</b>	<b>4,839</b>	<b>7,563</b>	<b>1,340</b>	<b>3,561</b>	<b>4,901</b>
<b>Natural Spawner Subtotals</b>	<b>17,239</b>	<b>95,104</b>	<b>112,343</b>	<b>3,472</b>	<b>28,112</b>	<b>31,584</b>	<b>1,894</b>	<b>13,937</b>	<b>15,831</b>
<b>Total Spawner Escapement</b>	<b>18,499</b>	<b>126,379</b>	<b>144,878</b>	<b>3,916</b>	<b>39,197</b>	<b>43,113</b>	<b>2,446</b>	<b>17,515</b>	<b>19,961</b>

**IN-RIVER HARVEST**

	2014			2015			2016		
	Grilse	Adults	Totals	Grilse	Adults	Totals	Grilse	Adults	Totals
<b>Angler Harvest</b>									
Klamath River (below Hwy 101 bridge)	268	1,093	1,361	292	2,914	3,206	31	801	832
Klamath River (Hwy 101 to Weitchpec)	2,847	1,875	4,722	1,224	2,258	3,482	91	24	115
Klamath River (Weitchpec to IGH)	75	1,496	1,571	65	2,607	2,672	24	416	440
Trinity River basin above Weitchpec aa/	174	922	1,096	24	63	87	16	69	85
<b>Angler Harvest Subtotals:</b>	<b>3,364</b>	<b>5,386</b>	<b>8,750</b>	<b>1,605</b>	<b>7,842</b>	<b>9,447</b>	<b>162</b>	<b>1,310</b>	<b>1,472</b>
<b>Tribal Harvest e/</b>									
Klamath River (below Hwy 101 bridge)	153	20,096	20,249	405	22,508	22,913	121	3,185	3,306
Klamath River (Hwy 101 to Trinity mouth)	130	3,432	3,562	44	3,520	3,564	19	1,224	1,243
Trinity River (Hoopa Reservation)	65	2,439	2,504	47	2,020	2,067	20	751	771
<b>Tribal Harvest Subtotals:</b>	<b>348</b>	<b>25,967</b>	<b>26,315</b>	<b>496</b>	<b>28,048</b>	<b>28,544</b>	<b>160</b>	<b>5,160</b>	<b>5,320</b>
<b>Total In-river Harvest</b>	<b>3,712</b>	<b>31,353</b>	<b>35,065</b>	<b>2,101</b>	<b>35,890</b>	<b>37,991</b>	<b>322</b>	<b>6,470</b>	<b>6,792</b>

**IN-RIVER RUN**

	2014			2015			2016		
	Grilse	Adults	Totals	Grilse	Adults	Totals	Grilse	Adults	Totals
<b>Totals</b>									
In-river Harvest and Escapement	22,211	157,732	179,943	6,017	75,087	81,104	2,768	23,985	26,753
Angling Mortality (2.04% of harvest) f/	69	110	179	33	160	193	3	27	30
Net Mortality (8.70% of harvest) f/	31	2,282	2,313	43	2,451	2,494	14	459	473
Klamath Basin disease testing jj/	10	272	282	1	123 kk/	124 kk/	2	111	113
<b>Total In-river Run</b>	<b>22,321</b>	<b>160,396</b>	<b>182,717</b>	<b>6,094</b>	<b>77,821</b>	<b>83,915</b>	<b>2,787</b>	<b>24,582</b>	<b>27,369</b>

(continued next page)

**Klamath River Basin Fall Chinook Salmon Spawner Escapement, In-river Harvest and Run-size Estimates,  
1978-2021 a/**

**SPAWNER ESCAPEMENT**

	2017			2018			2019		
	Grilse	Adults	Totals	Grilse	Adults	Totals	Grilse	Adults	Totals
<b>Hatchery Spawners</b>									
Iron Gate Hatchery (IGH)	3,193	7,443	10,636	435	11,425	11,860	249	3,797	4,046
Trinity River Hatchery (TRH)	1,863	3,770	5,633	171	7,142	7,313	205	1,381	1,586
<b>Hatchery Spawner Subtotals:</b>	<b>5,056</b>	<b>11,213</b>	<b>16,269</b>	<b>606</b>	<b>18,567</b>	<b>19,173</b>	<b>454</b>	<b>5,178</b>	<b>5,632</b>
<b>Natural Spawners</b>									
Main Stem Klamath River n/ (excluding IGH)	2,322	3,922	6,244	673	11,447	12,120	478	3,225	3,703
Salmon River basin	327	1,338	1,665	285	1,228	1,513	686	957	1,643
Scott River basin	307	2,269	2,576	71	1,208	1,279	409	1,681	2,090
Shasta River basin	6,618	3,287	9,905	2,017	18,675	20,692	78	5,926	6,004
Bogus Creek basin	848	1,874	2,722	196	3,482	3,678	149	990	1,139
Misc. Klamath tributaries o/ (above Yurok Reservation)	154	1,002	1,156	131	1,269	1,400	488	658	1,146
Yurok Reservation tribs. (Klamath River) p/	45	140	185	118	196	314	26	91	117
<b>Klamath Natural Spawner Subtotals:</b>	<b>10,621</b>	<b>13,832</b>	<b>24,453</b>	<b>3,491</b>	<b>37,505</b>	<b>40,996</b>	<b>2,314</b>	<b>13,528</b>	<b>15,842</b>
Main Stem Trinity River dd/ (excluding TRH)	5,492	4,330	9,822	4,133	14,707	18,840	3,666	6,379	10,045
Misc. Trinity tributaries o/ (above Hoopa Reservation)	96	76	172	21	76	97	15	27	42
Hoopa Reservation tribs. (Trinity River) p/	92	72	164	18	64	82	51	88	139
<b>Trinity Natural Spawner Subtotals:</b>	<b>5,680</b>	<b>4,478</b>	<b>10,158</b>	<b>4,172</b>	<b>14,847</b>	<b>19,019</b>	<b>3,732</b>	<b>6,494</b>	<b>10,226</b>
<b>Natural Spawner Subtotals</b>	<b>16,301</b>	<b>18,310</b>	<b>34,611</b>	<b>7,663</b>	<b>52,352</b>	<b>60,015</b>	<b>6,046</b>	<b>20,022</b>	<b>26,068</b>
<b>Total Spawner Escapement</b>	<b>21,357</b>	<b>29,523</b>	<b>50,880</b>	<b>8,269</b>	<b>70,919</b>	<b>79,188</b>	<b>6,500</b>	<b>25,200</b>	<b>31,700</b>

**IN-RIVER HARVEST**

	2017			2018			2019		
	Grilse	Adults	Totals	Grilse	Adults	Totals	Grilse	Adults	Totals
<b>Angler Harvest</b>									
Klamath River (below Hwy 101 bridge)	26	47	73	121	435	556	252	758	1,010
Klamath River (Hwy 101 to Weitchpec)	10	17	27	1,780	1,603	3,383	2,266	2,552	4,818
Klamath River (Weitchpec to IGH)	0	0	0	77	1,027	1,104	91	1,668	1,759
Trinity River basin above Weitchpec aa/	6	7	13	259	1,045	1,304	176	398	574
<b>Angler Harvest Subtotals:</b>	<b>42</b>	<b>71</b>	<b>113</b>	<b>2,237</b>	<b>4,110</b>	<b>6,347</b>	<b>2,785</b>	<b>5,376</b>	<b>8,161</b>
<b>Tribal Harvest e/</b>									
Klamath River (below Hwy 101 bridge)	66	208	274	86	8,665	8,751	40	3,316	3,356
Klamath River (Hwy 101 to Trinity mouth)	6	12	18	42	3,779	3,821	53	608	661
Trinity River (Hoopa Reservation)	194	1,660	1,854	180	2,325	2,505	499	2,065	2,564
<b>Tribal Harvest Subtotals:</b>	<b>266</b>	<b>1,880</b>	<b>2,146</b>	<b>308</b>	<b>14,769</b>	<b>15,077</b>	<b>592</b>	<b>5,989</b>	<b>6,581</b>
<b>Total In-river Harvest</b>	<b>308</b>	<b>1,951</b>	<b>2,259</b>	<b>2,545</b>	<b>18,879</b>	<b>21,424</b>	<b>3,377</b>	<b>11,365</b>	<b>14,742</b>

**IN-RIVER RUN**

	2017			2018			2019		
	Grilse	Adults	Totals	Grilse	Adults	Totals	Grilse	Adults	Totals
<b>Totals</b>									
In-river Harvest and Escapement	21,665	31,474	53,139	10,814	89,798	100,612	9,877	36,565	46,442
Angling Mortality (2.04% of harvest) f/	1	1	2	46	84	130	57	110	167
Net Mortality (8.70% of harvest) f/	16	163	179	12	1,178	1,190	16	401	417
Klamath Basin disease testing jj/	0	0	0	0	0	0	1	8	9
<b>Total In-river Run</b>	<b>21,682</b>	<b>31,638</b>	<b>53,320</b>	<b>10,872</b>	<b>91,060</b>	<b>101,932</b>	<b>9,951</b>	<b>37,084</b>	<b>47,035</b>

**Klamath River Basin Fall Chinook Salmon Spawner Escapement, In-river Harvest and Run-size Estimates,  
1978-2021 a/**

**SPAWNER ESCAPEMENT**

	2020			2021			2022		
	Grilse	Adults	Totals	Grilse	Adults	Totals	Grilse	Adults	Totals
<b>Hatchery Spawners</b>									
Iron Gate Hatchery (IGH)	413	4,042	4,455	494	7,012	7,506			0
Trinity River Hatchery (TRH)	2,815	4,289	7,104	129	5,838	5,967			0
<b>Hatchery Spawner Subtotals:</b>	<b>3,228</b>	<b>8,331</b>	<b>11,559</b>	<b>623</b>	<b>12,850</b>	<b>13,473</b>	<b>0</b>	<b>0</b>	<b>0</b>
<b>Natural Spawners</b>									
Main Stem Klamath River n/ (excluding IGH)	150	3,028	3,178	860	4,400	5,260			0
Salmon River basin	122	972 hh/	1,094	263	1,890	2,153			0
Scott River basin	43	812	855	655	1,307	1,962			0
Shasta River basin	393	3,775	4,168	927	5,972	6,899			0
Bogus Creek basin	88	2,233	2,321	423	2,253	2,676			0
Misc. Klamath tributaries o/ (above Yurok Reservation)	34	874	908	179	1,003	1,182			0
Yurok Reservation tribs. (Klamath River) p/	99	124	223	25	119	144			0
<b>Klamath Natural Spawner Subtotals:</b>	<b>929</b>	<b>11,818</b>	<b>12,747</b>	<b>3,332</b>	<b>16,944</b>	<b>20,276</b>	<b>0</b>	<b>0</b>	<b>0</b>
Main Stem Trinity River dd/ (excluding TRH)	3,885	14,071	17,956	3,274	12,998	16,272 ll/			0
Misc. Trinity tributaries o/ (above Hoopa Reservation)	97	214	311	33	130	163			0
Hoopa Reservation tribs. (Trinity River) p/	37	82	119	32	124	156			0
<b>Trinity Natural Spawner Subtotals:</b>	<b>4,019</b>	<b>14,367</b>	<b>18,386</b>	<b>3,339</b>	<b>13,252</b>	<b>16,591</b>	<b>0</b>	<b>0</b>	<b>0</b>
<b>Natural Spawner Subtotals</b>	<b>4,948</b>	<b>26,185</b>	<b>31,133</b>	<b>6,671</b>	<b>30,196</b>	<b>36,867</b>	<b>0</b>	<b>0</b>	<b>0</b>
<b>Total Spawner Escapement</b>	<b>8,176</b>	<b>34,516</b>	<b>42,692</b>	<b>7,294</b>	<b>43,046</b>	<b>50,340</b>	<b>0</b>	<b>0</b>	<b>0</b>

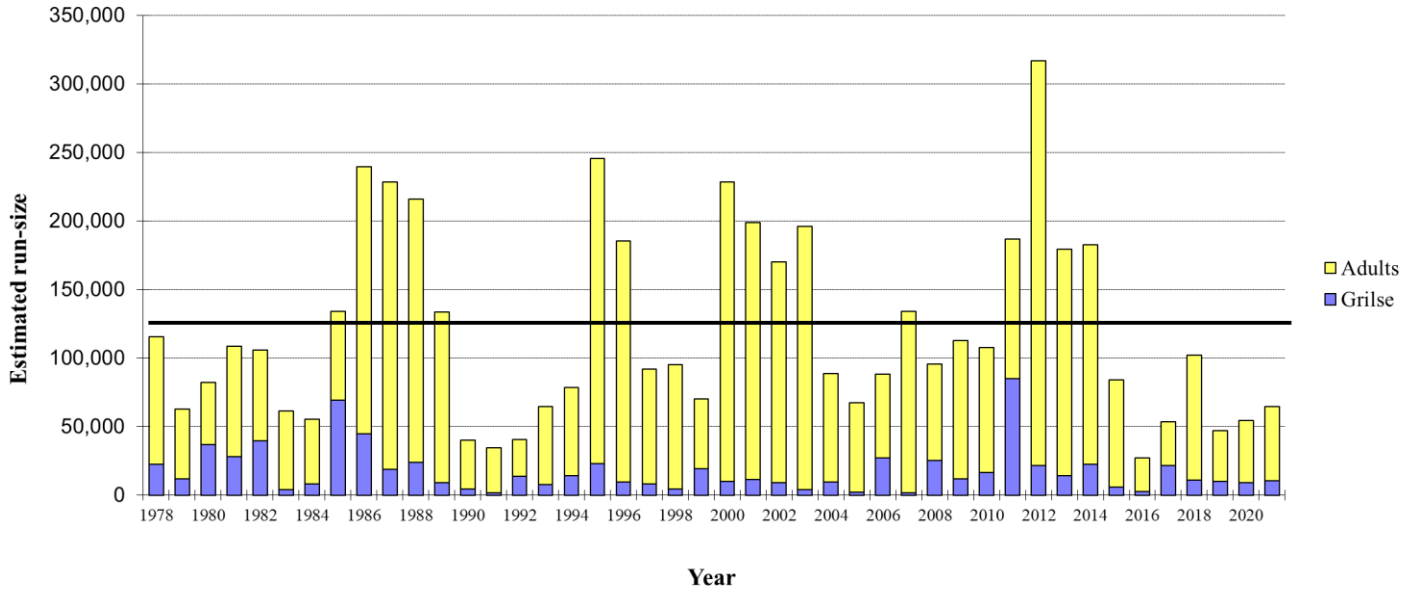
**IN-RIVER HARVEST**

	2020			2021			2022		
	Grilse	Adults	Totals	Grilse	Adults	Totals	Grilse	Adults	Totals
<b>Angler Harvest</b>									
Klamath River (below Hwy 101 bridge)	39	206	245	138	249	387			0
Klamath River (Hwy 101 to Weitchpec)	343	2,946	3,289	2,161	900	3,061			0
Klamath River (Weitchpec to IGH)	134	1,589	1,723	74	579	653			0
Trinity River basin above Weitchpec aa/	17	382	399	24	537	561			0
<b>Angler Harvest Subtotals:</b>	<b>533</b>	<b>5,123</b>	<b>5,656</b>	<b>2,397</b>	<b>2,265</b>	<b>4,662</b>	<b>0</b>	<b>0</b>	<b>0</b>
<b>Tribal Harvest e/</b>									
Klamath River (below Hwy 101 bridge)	85	1,730	1,815	17	2,598	2,615			0
Klamath River (Hwy 101 to Trinity mouth)	156	2,503	2,659	144	2,842	2,986			0
Trinity River (Hoopa Reservation)	87	979	1,066	451	2,626	3,077			0
<b>Tribal Harvest Subtotals:</b>	<b>328</b>	<b>5,212</b>	<b>5,540</b>	<b>612</b>	<b>8,066</b>	<b>8,678</b>	<b>0</b>	<b>0</b>	<b>0</b>
<b>Total In-river Harvest</b>	<b>861</b>	<b>10,335</b>	<b>11,196</b>	<b>3,009</b>	<b>10,331</b>	<b>13,340</b>	<b>0</b>	<b>0</b>	<b>0</b>

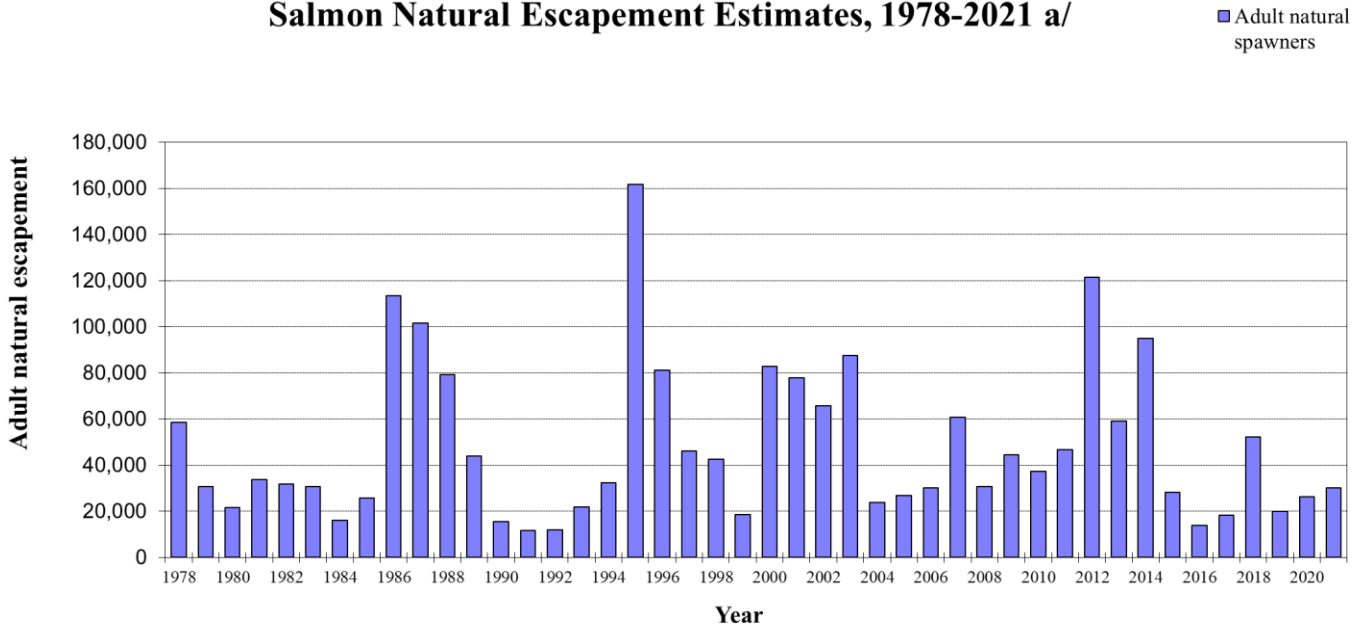
**IN-RIVER RUN**

	2020			2021			2022		
	Grilse	Adults	Totals	Grilse	Adults	Totals	Grilse	Adults	Totals
<b>Totals</b>									
In-river Harvest and Escapement	9,037	44,851	53,888	10,303	53,377	63,680	0	0	0
Angling Mortality (2.04% of harvest) f/	11	105	116	49	46	95	0	0	0
Net Mortality (8.70% of harvest) f/	29	453	482	26	671	697			0
Klamath Basin disease testing jj/	0	0	0	6	113	119	0	0	0
<b>Total In-river Run</b>	<b>9,077</b>	<b>45,409</b>	<b>54,486</b>	<b>10,384</b>	<b>54,207</b>	<b>64,591</b>	<b>0</b>	<b>0</b>	<b>0</b>

### Klamath River Basin Fall-Run Chinook Salmon Run-size Estimates, 1978-2021 a/



### Klamath River Basin Adult Fall-Run Chinook Salmon Natural Escapement Estimates, 1978-2021 a/



a/ 2021 data are preliminary



**Footnotes for Klamath River Basin Fall Chinook Salmon Spawner Escapement,  
In-River Harvest and Run-size Estimates, 1978-2021 <sup>a</sup>**

- a/ Prepared February 23, 2022. All counts/estimates are provided by California Department of Fish and Wildlife (CDFW) unless otherwise indicated. All estimates for Iron Gate and Trinity River hatcheries represent counts of fish entering those facilities. All spawner escapement estimates for the Shasta River basin for 1978-1987 and 1989-2021, plus those for Bogus Creek basin for 1980-1991 and 2003-2021 are based on counts made at counting/video stations located near the mouths of those streams. All remaining spawner escapements and all harvest estimates are developed from data obtained through ongoing field investigations in the Klamath-Trinity system. Estimate for years through 2020 are final; 2021 estimates are preliminary, subject to revision. Further details can be found KRTT (2022, <https://www.pcouncil.org/salmon/background/document-library/>)
- b/ Data not available.
- c/ USFWS estimate.
- d/ In 1978, the Klamath River system sport salmon fishing season was closed August 25. There was essentially no sport harvest of fall Chinook in the Trinity River basin in 1978.
- e/ USFWS estimates for years through 1982; 1983 through 1993 estimates jointly made by USFWS and Hoopa Valley Business Council Fisheries Department (HVBCFD); 1994 through 2021 estimates made by HVBCFD for the Hoopa Reservation and Yurok Tribal Fisheries Department for the Yurok Reservation.
- f/ Factors for non-landed catch mortality calculated by the Klamath River Technical Advisory Team (KRTAT, 1986, "Recommended Spawning Escapement Policy for Klamath River Fall-run Chinook"). Modified non-landed catch mortality rates of 2.04% and 8.70% were applied to sport and net harvest respectively following the 2003 season. These rates were applied retrospectively to all years, replacing the historical rates of 2.0% (sport harvest) and 8.0% (net harvest).
- g/ U.S. Forest Service estimate.
- h/ HVBCFD estimate. Estimate for streams in Hoopa Reservation only.
- i/ In 1985, the Klamath River system sport salmon fishing season was closed to the taking of all salmon below the U.S. Highway 101 bridge from September 9 through December 31; the Klamath from the U.S. Highway 101 bridge to Iron Gate Dam and the Trinity River from its mouth to Lewiston Dam were closed to the taking of salmon 22 inches and longer from September 23 through December 31, 1985.
- j/ Estimates for Hoopa Reservation portion of catch (947 grilse and 1,941 adults) are of catch occurring during open fishing periods only.
- k/ Estimates jointly made by USFWS and HVBCFD/HVTF.
- l/ Final estimates of Salmon River basin natural spawners shown in the December 11, 1991 table were incorrect. Corrected estimates, plus necessary revisions to the 1990 totals, are presented here.
- m/ Estimate does not include adults that, following entry into Iron Gate Hatchery, were returned to the river alive and un-spawned, and which are presumed to have spawned naturally. This includes 2,333 fish in 1994 and 8,932 fish in 1995.
- n/ CDFG estimate based on USFWS redd count data through 2000. Estimates for 2001-2021 are USFWS estimates based on a combination of redd count data (Shasta River downstream to Indian Cr.) and carcass mark-recapture estimates upstream of the Shasta River. In 2017 the survey reach was extended to include the mainstem river between Indian Cr. and Wingate Bar. In 2020 the survey reach was further extended to include the mainstem river from Persido Bar to Green Riffle and from Whitmore to Big Bar.
- o/ CDFW and USFS, estimates. In 2020 Willow Creek was added to account for fish previously included in estimates upstream of Willow Creek Weir (see dd/).
- p/ HVBCFD and YTFD estimates. YTFD fish count for Blue Creek is based on several dive surveys conducted at peak of spawning and should not be construed as an escapement estimate. HVBCFD tributary estimates are based on redd counts.
- q/ 750 of these adults were harvested between I-5 and IGH after the river reopened to sport angling on 13 Oct. 1995
- r/ Includes 51 grilse and 178 adults harvested in the main stem Trinity River between Willow Creek weir and the mouth of the Trinity River. HVBCFD estimate.
- s/ Includes 251 grilse and 645 adults harvested in the main stem Trinity River between Willow Creek weir and the mouth of the Trinity River. HVBCFD estimate.
- t/ Additional, but unknown harvest occurred upstream of Interstate 5 for jacks between Oct.2-18 and Oct.18-Nov. 30 for all Chinook after Iron Gate Hatchery reached its required 8,000 adult Chinook spawning escapement.
- u/ Includes 298 grilse and 799 adults harvested in the main stem Trinity River between Willow Creek weir and the mouth of the Trinity River. HVBCFD estimate.
- v/ Additional, but unknown harvest occurred upstream of Interstate 5 for jacks between Oct.4 - 17 after the 28-day window and Oct. 17 - Nov. 30 for all Chinook after Iron Gate Hatchery reached its required 8,000 adult Chinook spawning escapement.
- x/ Includes fish originally classified as grilse, based on the 24-inch TL specified in the 1998 sport angling regulations, which were re-classified as adult based on preliminary analysis of 1998 data.
- y/ Includes 21 grilse and 42 adults harvested after the lower river reopened on Oct. 15, 1999.

**Footnotes for Klamath River Basin Fall Chinook Salmon Spawner Escapement,  
In-river Harvest and Run-size Estimates, 1978-2021 <sup>a</sup>**

- z/ Harvest estimate based on creel census data and includes 54 grilse and 206 adults harvested during the secondary season allowed above the Interstate 5 bridge after IGH achieved 8,000 adult spawners.
- aa/ Harvest estimate based on HVTF creel census below the Willow Creek Weir and CDFW's estimate based on tag returns for the Trinity River above Willow Creek Weir.
- bb/ Harvest estimate based on creel census data and includes 113 grilse and 938 adults harvested during the secondary season allowed above the Interstate 5 bridge after IGH achieved 8,000 adult spawners.
- cc/ Includes 9 jacks and 252 adults estimated to have spawned in the mainstem Trinity River downstream of the Willow Creek Weir. Estimate based on HVBCFD expanded redd count data.
- dd/ Estimates upstream of Willow Creek weir provided by CDFW and are inclusive of the total basin upstream of weir; estimates downstream of Willow Creek weir provided by HVTF and only include the main stem Trinity to its confluence with the Klamath River. In 2020 Willow Creek weir was moved approximately 6 km upstream.
- ee/ Prespawn mortality estimate for Chinook Salmon that died in the lower Klamath River fish die off, 2002. Estimate provided by USFWS.
- ff/ Estimated 2006 river recreational fishery adult impacts (incidental mortality). Estimation methods documented in 2007 PFMC pre-season report I.
- gg/ The 2006 sport fishery was closed to the take of adult fall Chinook (greater than 22 inches).
- hh/ The 2009, 2010, 2016, 2017, and 2021 Salmon River adult escapement estimates were based on total redd counts (2009) or redd counts from surveys conducted early in the spawning season expanded based on historical cumulative average (2010, 2016, 2017, and 2021). Further details can be found in Klamath River Technical Team reports.
- ii/ Salmon River adult escapement estimates for 2013 were based on carcass mark-recapture survey within the main-stem combined with redd surveys of the lower main-stem and tributaries. Jacks were estimated from scale age data.
- jj/ Chinook specimens were collected from Klamath River for disease (specifically *Ichthyophthirius multifiliis*) testing.
- kk/ Values updated in 2017 to include 20 fish taken for disease (specifically *Ichthyophthirius multifiliis*) testing in the Trinity River, which were not included in previously distributed drafts of the Megatable.
- ll/ Approximately 100-300 fish were caught and presumably died in a power flume adjacent to the fish ladder at Trinity River hatchery. These fish were presumably destined to return to the hatchery, but were instead included in estimates of natural area escapement.

**List of acronyms**

CDFW – California Department of Fish and Wildlife (nee CDFG – CA Department of Fish and Game)  
HVTFD – Hoopa Valley Tribal Fisheries Department (nee HVBCFD- Hoopa Valley Business Council Fisheries Department)  
IGH – Iron Gate Hatchery  
KRTAT – Klamath River Technical Advisory Team  
PFMC – Pacific Fishery Management Council  
TRH – Trinity River Hatchery  
USFS – United States Forest Service  
USFWS – United States Fish and Wildlife Service  
YTFD – Yurok Tribe Fisheries Department